



KO_{RE}
KENTUCKY OPIOID
RESPONSE EFFORT

Katherine Marks, PhD

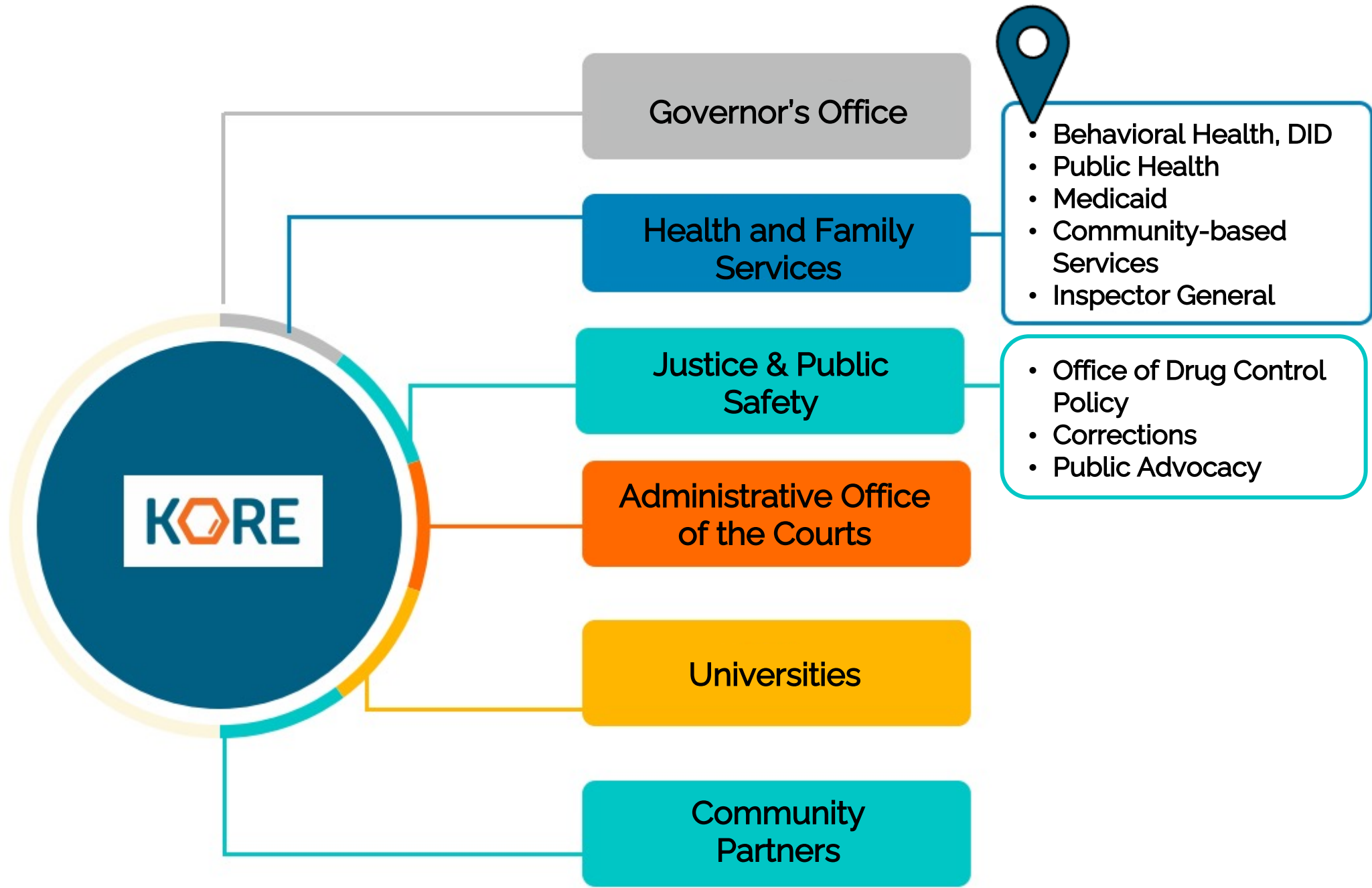
02/10/2022



STATEMENT OF PURPOSE

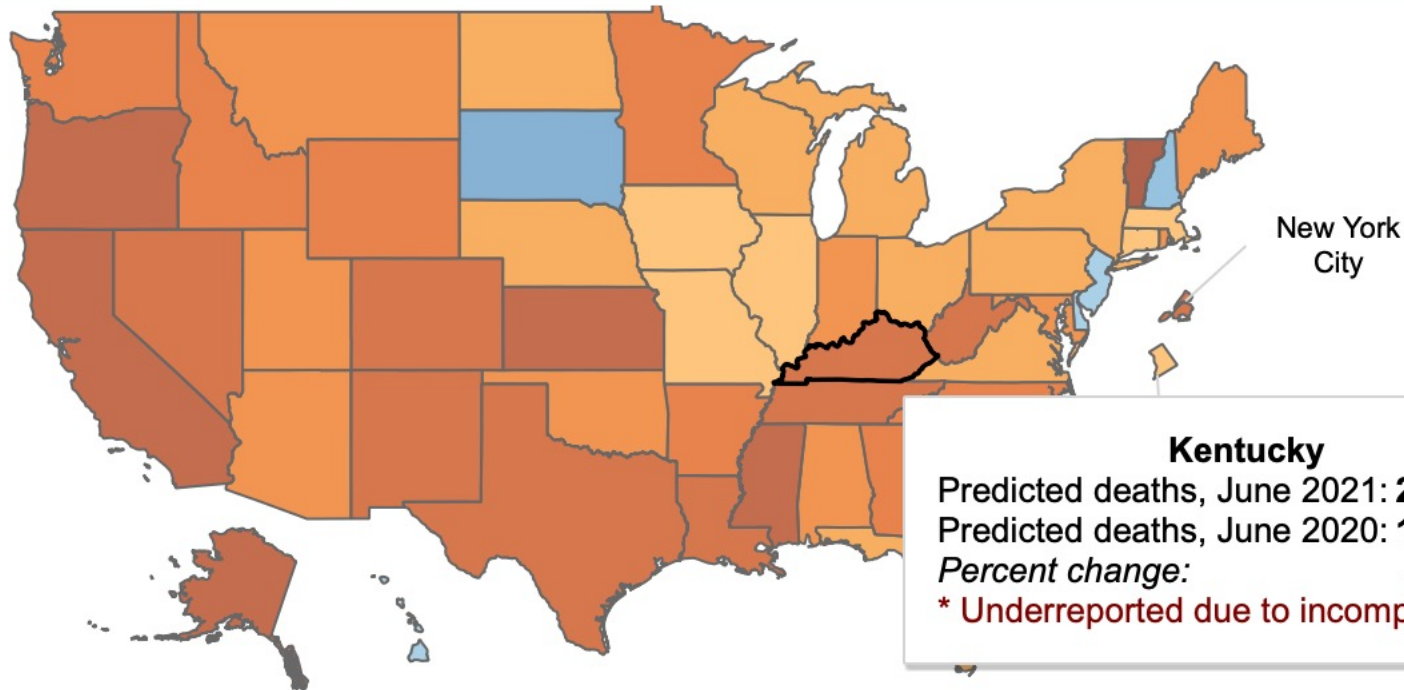
Guided by the Recovery-Oriented System of Care Framework, the purpose of the Kentucky Opioid Response Effort (KORE) is to implement a comprehensive targeted response to Kentucky's opioid crisis by expanding access to a full continuum of high quality, evidence-based opioid prevention, treatment, and recovery supports.





CDC Provisional Overdose Data

Figure 1b. Percent Change in Predicted 12 Month-ending Count of Drug Overdose Deaths, by Jurisdiction: June 2020 to June 2021



Kentucky
 Predicted deaths, June 2021: **2,303**
 Predicted deaths, June 2020: **1,706**
 Percent change: **35.0**
 * Underreported due to incomplete data.

Select predicted or reported number of deaths

- Predicted
- Reported

Percent Change for United States

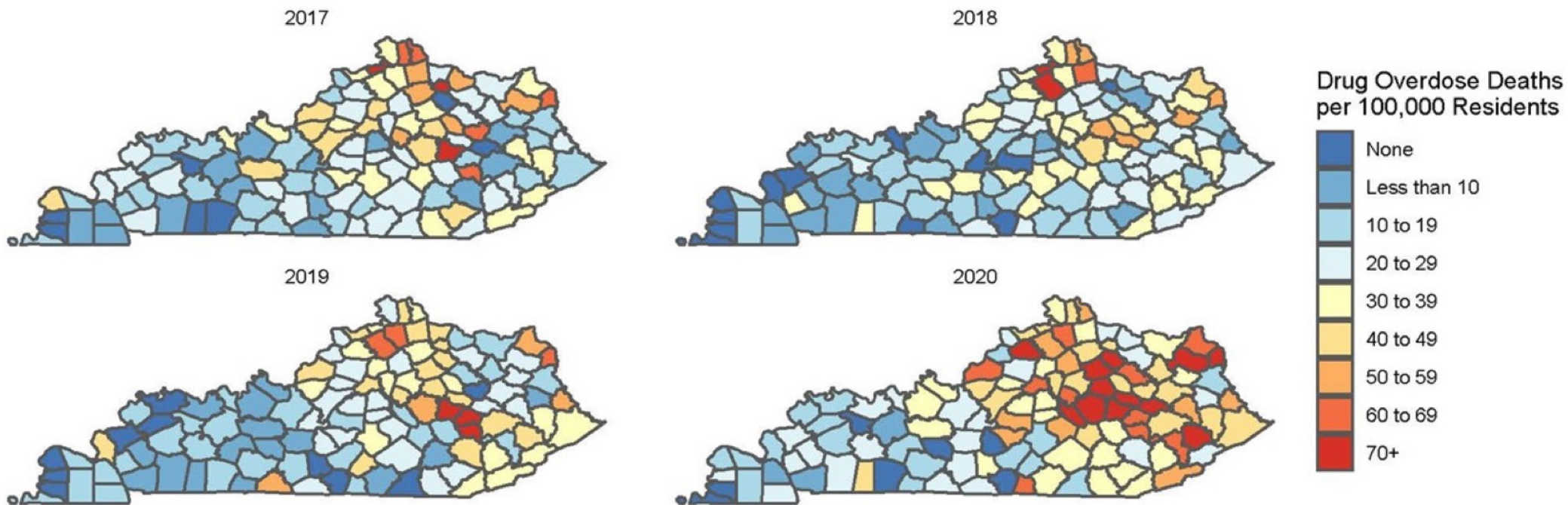
20.6 ▲



Ahmad FB, Rossen LM, Sutton P. Provisional drug overdose death counts. National Center for Health Statistics. 2022.

Designed by LM Rossen, A Lipphardt, FB Ahmad, JM Keralis, and Y Chong: National Center for Health Statistics.

Yearly Rates of Drug Overdose Deaths Among Kentucky Residents, 2017–2020



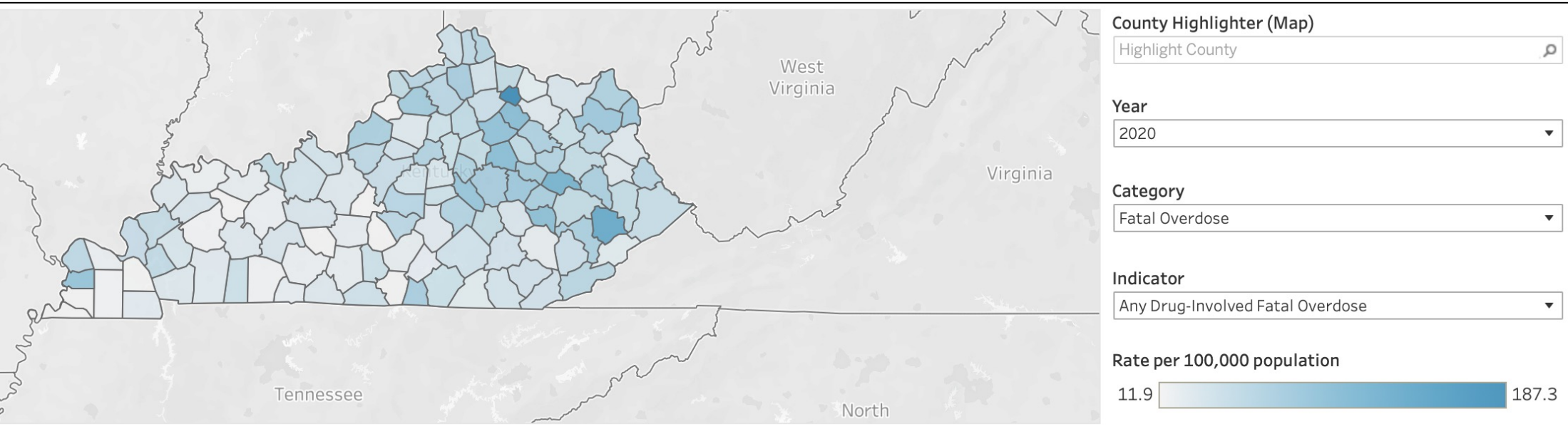
Data source: Kentucky Death Certificate Database, Kentucky Office of Vital Statistics, Cabinet for Health and Family Services.

Data are provisional and subject to change.

Produced by the Kentucky Injury Prevention and Research Center as bona fide agent for the Kentucky Department for Public Health, April 2021.



Kentucky Resident Drug Overdose Rates by State and Counties



Rate per 100,000 population for Kentucky Total

Category	Indicator	2016	2017	2018	2019	2020
Fatal Overdose	Any Drug-Involved Fatal Overdose	31.21	33.15	28	29.43	43.87
	Any Opioid-Involved Fatal Overdose	21.62	24.49	21.12	22.09	35.6
	Heroin-Involved Fatal Overdose	6.73	5.43	2.91	3.2	2.48
	Non-Heroin Opioid-Involved Fatal Overdose	18.2	22.49	20.27	21.62	35.45
	Stimulant-Involved Fatal Overdose	7.05	10.26	9.83	12.03	18.47
	Cocaine-Involved Fatal Overdose	3.15	3.79	2.69	2.5	3.71
	Non-Cocaine Stimulant-Involved Fatal Overdose	4.19	6.98	7.64	9.93	15.68
Nonfatal Overdose-Related ED Visits	Any Drug-Involved Nonfatal Overdose	295.75	320.77	266.18	254.68	287.99
	Any Opioid-Involved Nonfatal Overdose	137.72	157.58	114.71	109.09	140
	Heroin-Involved Nonfatal Overdose	102.9	118.7	81.2	73	83.71
	Non-Heroin Opioid-Involved Nonfatal Overdose	35.52	39.82	34.05	36.87	57.33
	Stimulant-Involved Nonfatal Overdose	13.72	19.86	19.71	16.68	16.33
	Cocaine-Involved Nonfatal Overdose	2.5	2.65	2.64	1.88	1.76
	Non-Cocaine Stimulant-Involved Nonfatal Overdose	11.67	17.6	17.54	15.92	11.7

OVERDOSE DEATH BY RACE

Race	2017	2018	2019	2020
Black	91	77	105	172
Other	13	22	20	20
White	1,372	1,151	1,191	1,772



64%

increase in drug overdose death among Black Kentuckians from 2019 - 2020

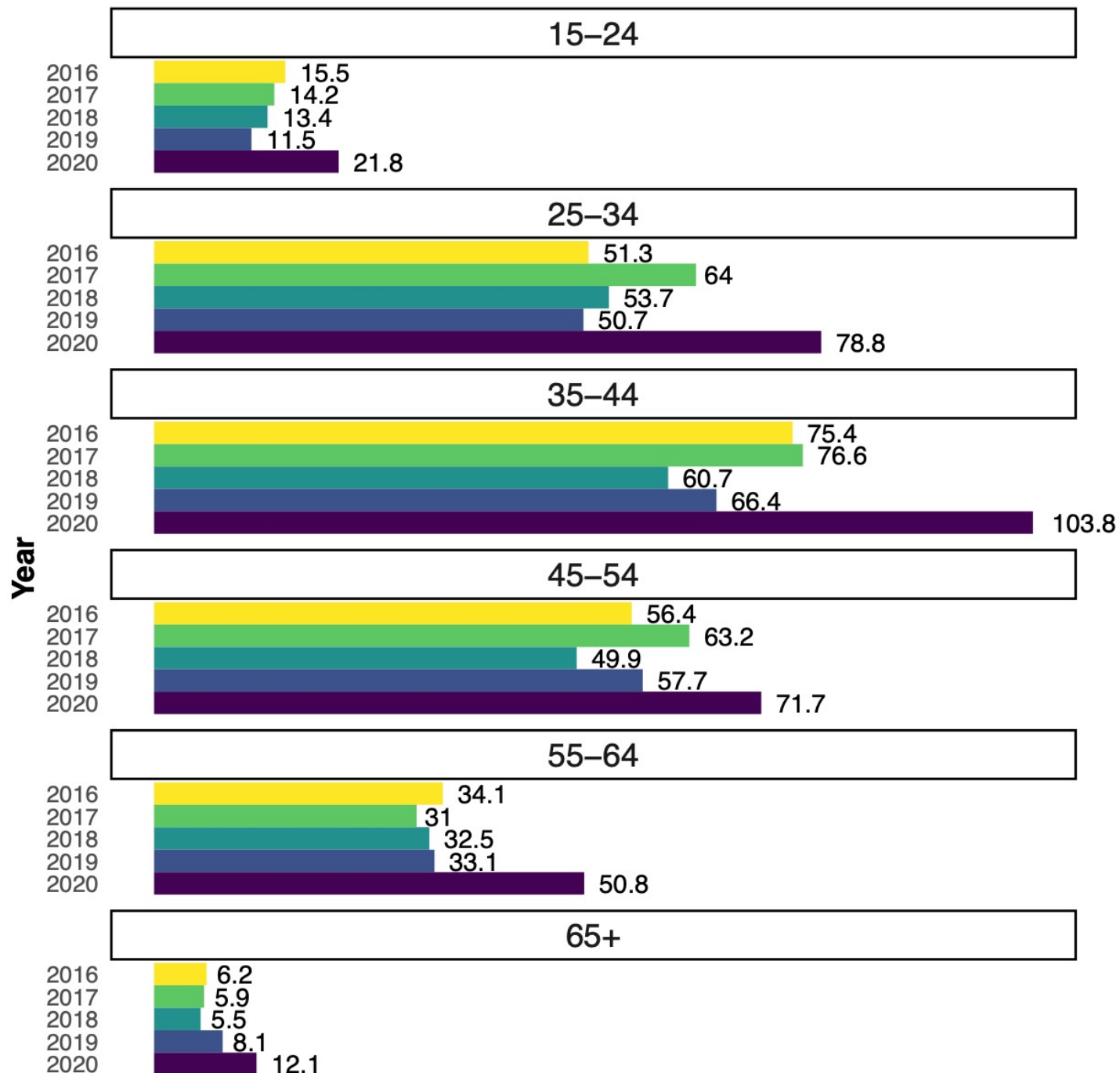


49%

increase in drug overdose deaths among White Kentuckians from 2019 - 2020



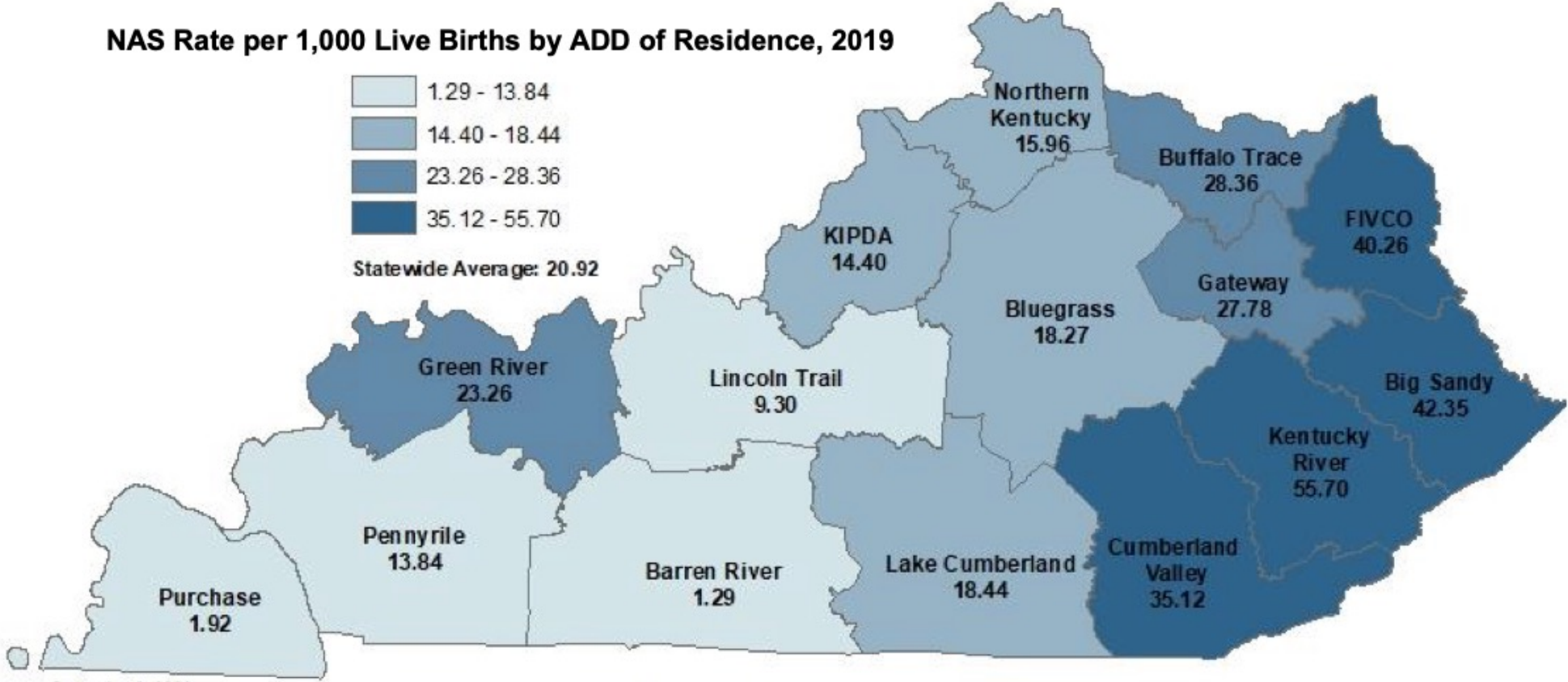
Age Group



Age-Specific Rate of Drug Overdose Deaths Kentucky Residents, by Age Group 2016-2020

Rates are expressed as the numbers of events per 100,000 population. Produced by the Kentucky Injury Prevention and Research Center as bona fide agent for the Kentucky Department for Public Health. Data are provisional and subject to change. December 2021.

NAS RATE BY ADD OF RESIDENCE, 2019



September 3, 2020
Data Source: Neonatal Absence Syndrome Reporting Registry; Kentucky Certificate of Live Birth.
Shapefiles from Kentucky Geography Network.
Mapped by Emily Ferrell, MPH, CPH

GUIDING PRINCIPLES OF SERVICE EXPANSION



THE KORE
FRAMEWORK



AVAILABLE
STATEWIDE



ACCESSIBLE +
EQUITABLE



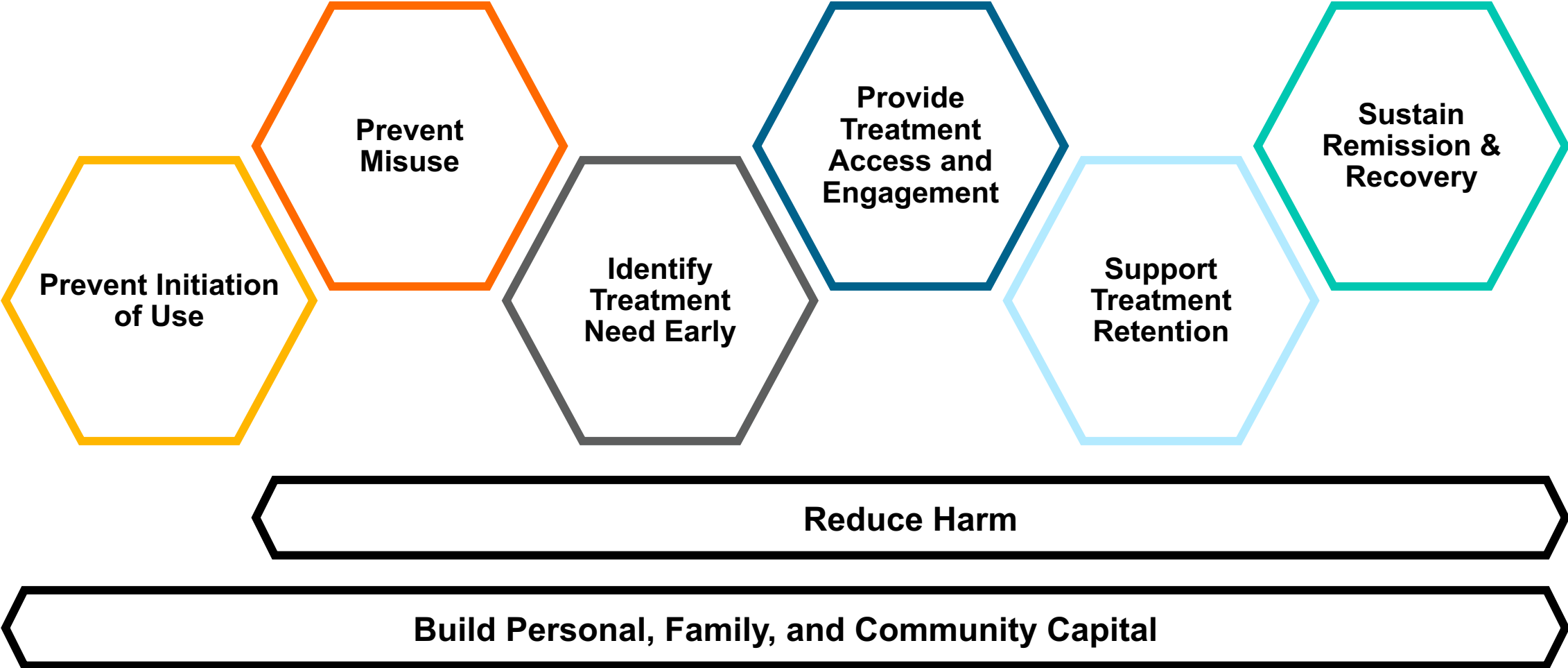
PERSON-CENTERED +
CULTURALLY APPROPRIATE

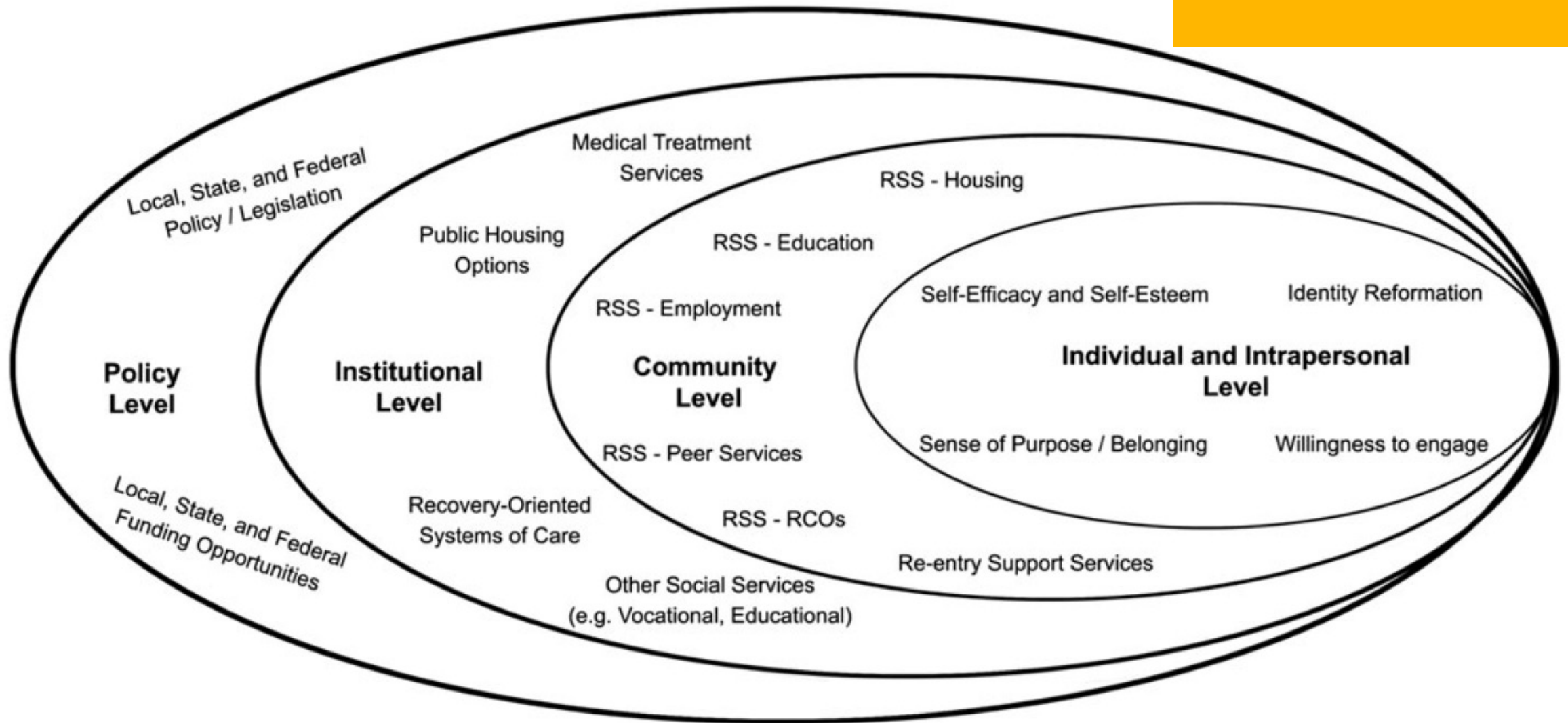


QUALITY +
EVIDENCE BASED



CASCADE OF CARE FRAMEWORK





PRIORITY POPULATIONS



Target
Populations
Informed by
Data



OPIOID OVERDOSE



PREGNANT/PARENTING
WITH OUD



JUSTICE-INVOLVED



CHILDREN/YOUTH/
FAMILIES IMPACTED BY
OUD



CO-OCCURRING MENTAL
HEALTH + OUD



KORE PROGRAMS



KORE SERVICES: FY2021

14,052

Individuals
received OUD
treatment
services

9,510

Individuals
received
recovery
support
services

53,820

Naloxone
units
distributed

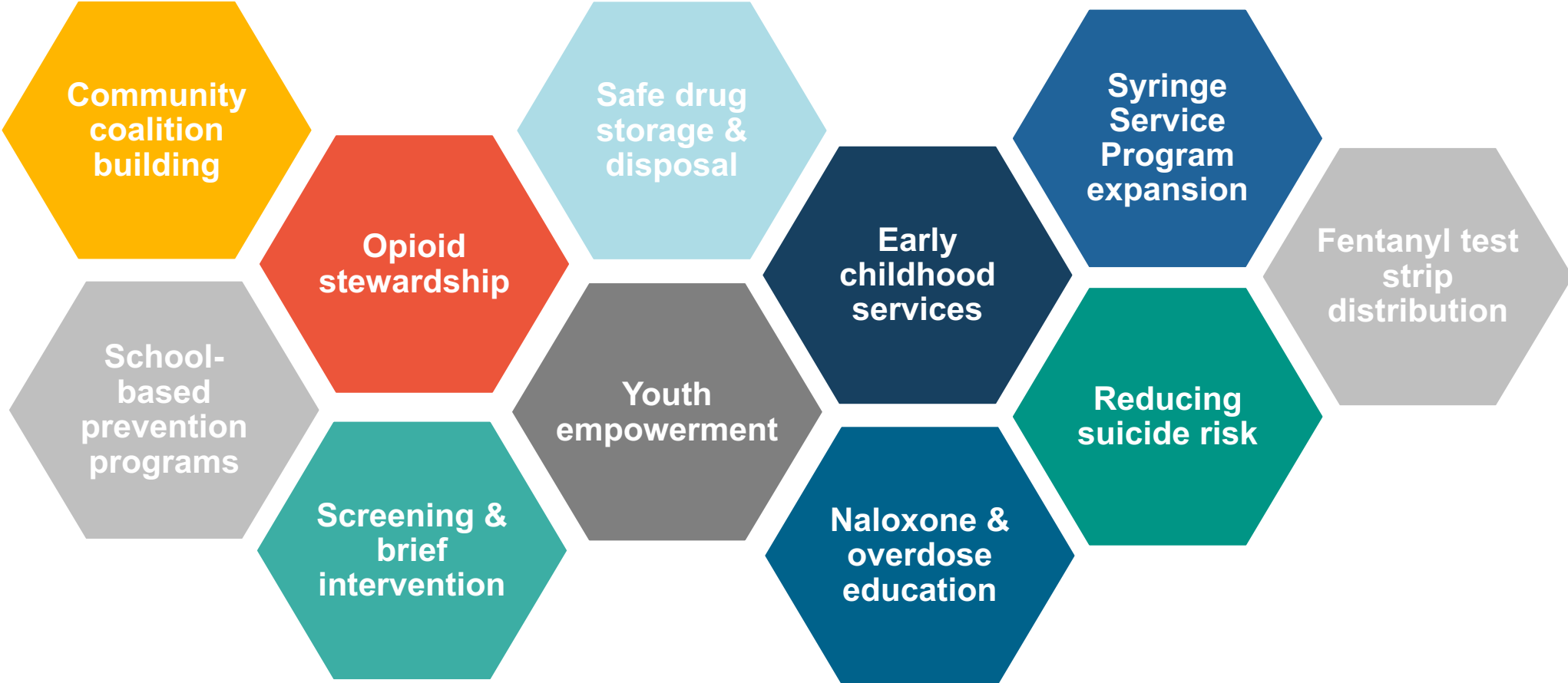
156

KORE-funded
programs
(246 agencies)

Infrastructure




Prevention + Harm Reduction



KENTUCKY MEDICAID COVERS NARCAN

PROVIDERS SHOULD CONSIDER PRESCRIBING WHEN PATIENTS.....

NARCAN COVERAGE 

KENTUCKY MEDICAID

DOES KENTUCKY MEDICAID COVER NARCAN?

Yes. Kentucky Medicaid - including all Managed Care Organizations (MCOs) - covers the life-saving medication naloxone (brand name Narcan®).





- Aetna Better Health of Kentucky
- Anthem Blue Cross Blue Shield
- Humana Healthy Horizons in Kentucky
- Passport Health Plan by Molina Healthcare
- UnitedHealthcare Community Plan
- WellCare of Kentucky
- Fee-For-Service


All Managed Care Organizations, including Fee-For-Service plans, cover intranasal naloxone (Narcan®).

Narcan® Nasal Spray has a quantity limit of at least 1 package (2 units) per 30 rolling days, depending on the MCO.


CDC RECOMMENDATIONS FOR NARCAN PRESCRIBING





Naloxone is highly effective and has saved lives from opioid overdoses, but can only do so if it is in the right hands, at the right time. The Centers for Disease Control and Prevention recommends healthcare providers should strongly consider prescribing or co-prescribing naloxone, and providing education about its use for patients who:

-  Are receiving opioids at a dosage of 50 morphine milligram equivalents (MME) per day
-  Have been prescribed benzodiazepines
-  Have respiratory conditions such as COPD or obstructive sleep apnea
-  Have a non-opioid substance use disorder, report excessive alcohol use, or have a mental health disorder

 **TRAINING ON OVERDOSE EDUCATION:**
[HTTPS://WWW.YOUTUBE.COM/WATCH?V=W82VEYDZ8](https://www.youtube.com/watch?v=W82VEYDZ8)

Healthcare providers can help prevent opioid-related overdose.

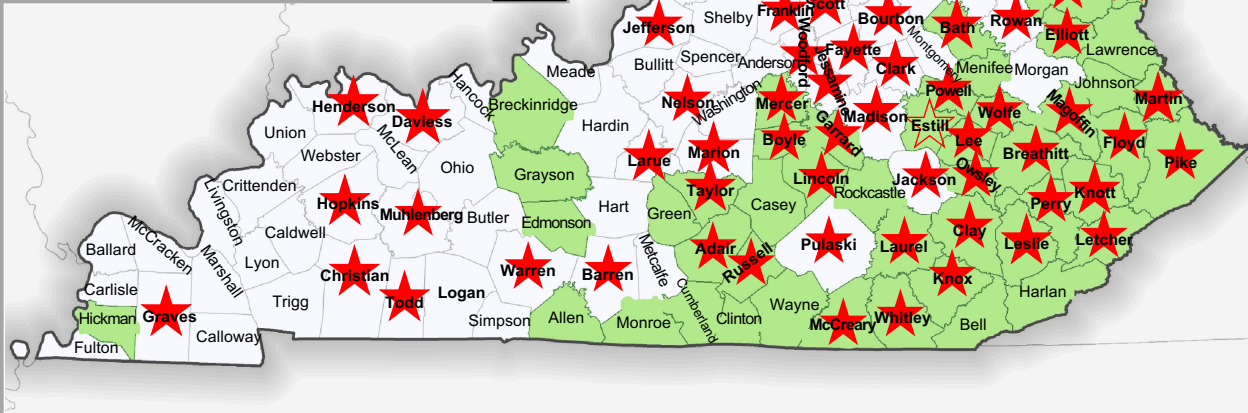
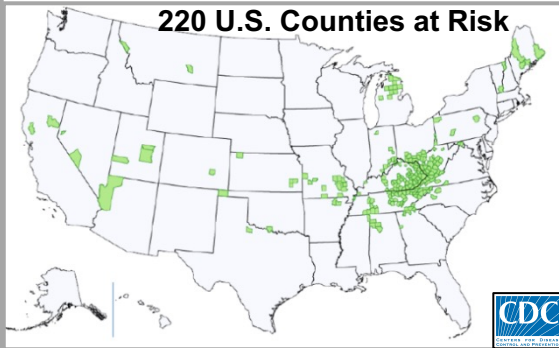
 **KORE** KENTUCKY OPIOID RESPONSE EFFORT

-  Are receiving opioids at a dosage of 50 morphine milligram equivalents (MME) per day
-  Have been prescribed benzodiazepines
-  Have respiratory conditions such as COPD or obstructive sleep apnea
-  Have a non-opioid substance use disorder, report excessive alcohol use, or have a mental health disorder



Kentucky Public Health
Prevent. Promote. Protect.

54 Kentucky Counties with Increased Vulnerability to Rapid Dissemination of HIV/HCV Infections Among People who Inject Drugs and Preventive Syringe Services Programs (SSPs)



National Ranking by County*

3	Breathitt	35	Boyle	125	Bath
4	Perry	39	Lawrence	126	Grayson
5	Clay	40	Rockcastle	129	Greenup**
6	Bell	45	Harlan	132	Green
8	Leslie	48	McCreary	153	Casey
9	Knox	50	Letcher	154	Carter
10	Floyd	53	Johnson	163	Monroe
11	Clinton	54	Russell	167	Garrard
12	Owsley	56	Elliott	175	Robertson
14	Whitley	65	Laurel	178	Lewis
15	Powell	67	Carroll	179	Edmonson
17	Knott	75	Taylor	180	Allen
21	Pike	77	Grant	187	Boyd
23	Magoffin	93	Adair	191	Hickman
25	Estill**	97	Lincoln	202	Breckinridge
30	Lee	99	Wayne	212	Campbell
31	Menifee	101	Cumberland	214	Mercer

* Vulnerable Counties in **RED** have Operating SSPs

** Approved, but no longer operational



54 Vulnerable Counties



81 Operating SSPs
(62 Counties) as of 2/04/2022



1 County is Approved but
Not Yet Operational

Specific concerns regarding Kentucky Counties:

1. Dense drug user networks similar to Scott County, Indiana
2. Lack of syringe services programs

NOTE: CDC stresses that this is a REGION-WIDE problem, not just a county-specific problem.





KY SOS

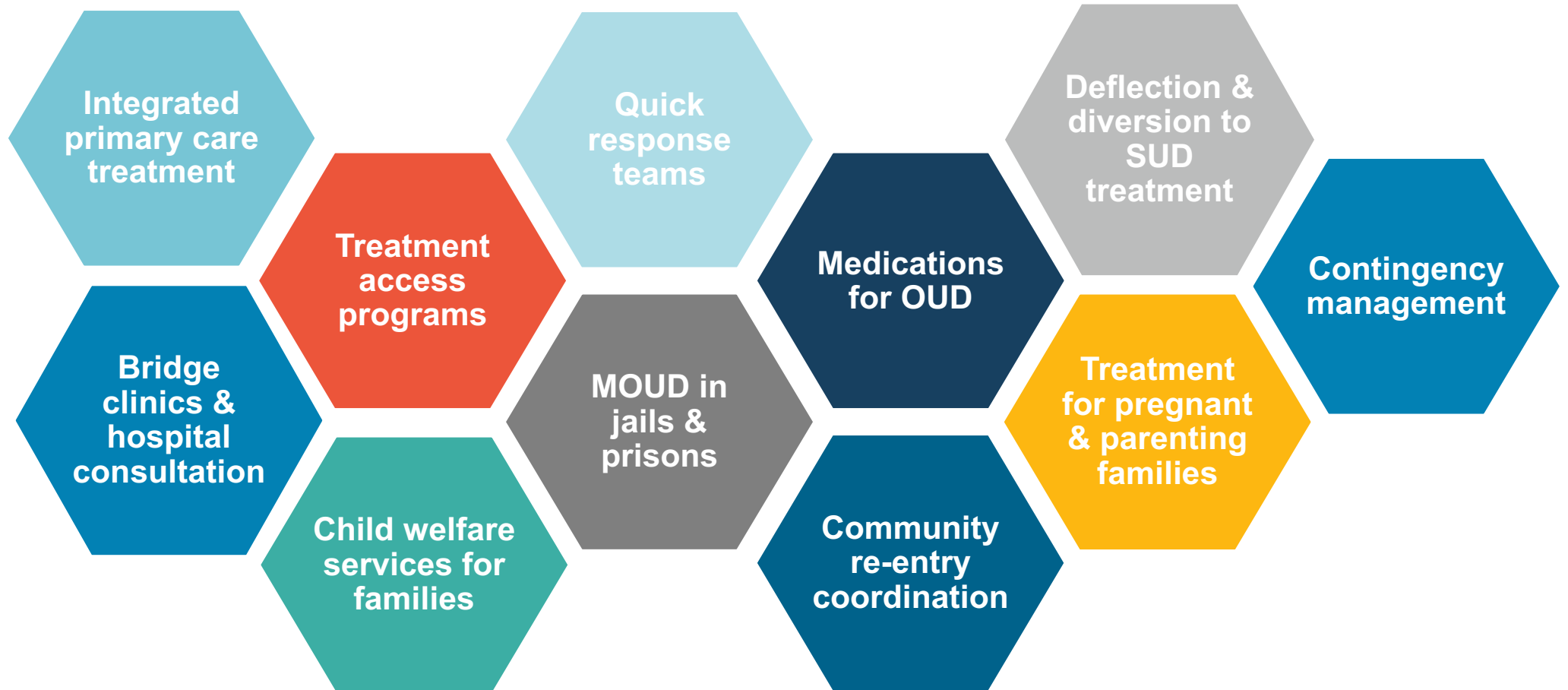
Statewide Opioid Stewardship



- COLLABORATION WITH HEALTH CARE COMMUNITY, KENTUCKY HOSPITAL ASSOCIATION
- TRAINING AND HOSPITAL CERTIFICATION TO IMPROVE PRESCRIBING FOR OPIOID AND NON-OPIOID PAIN MANAGEMENT
- 112 HOSPITAL COMMITMENTS



Treatment





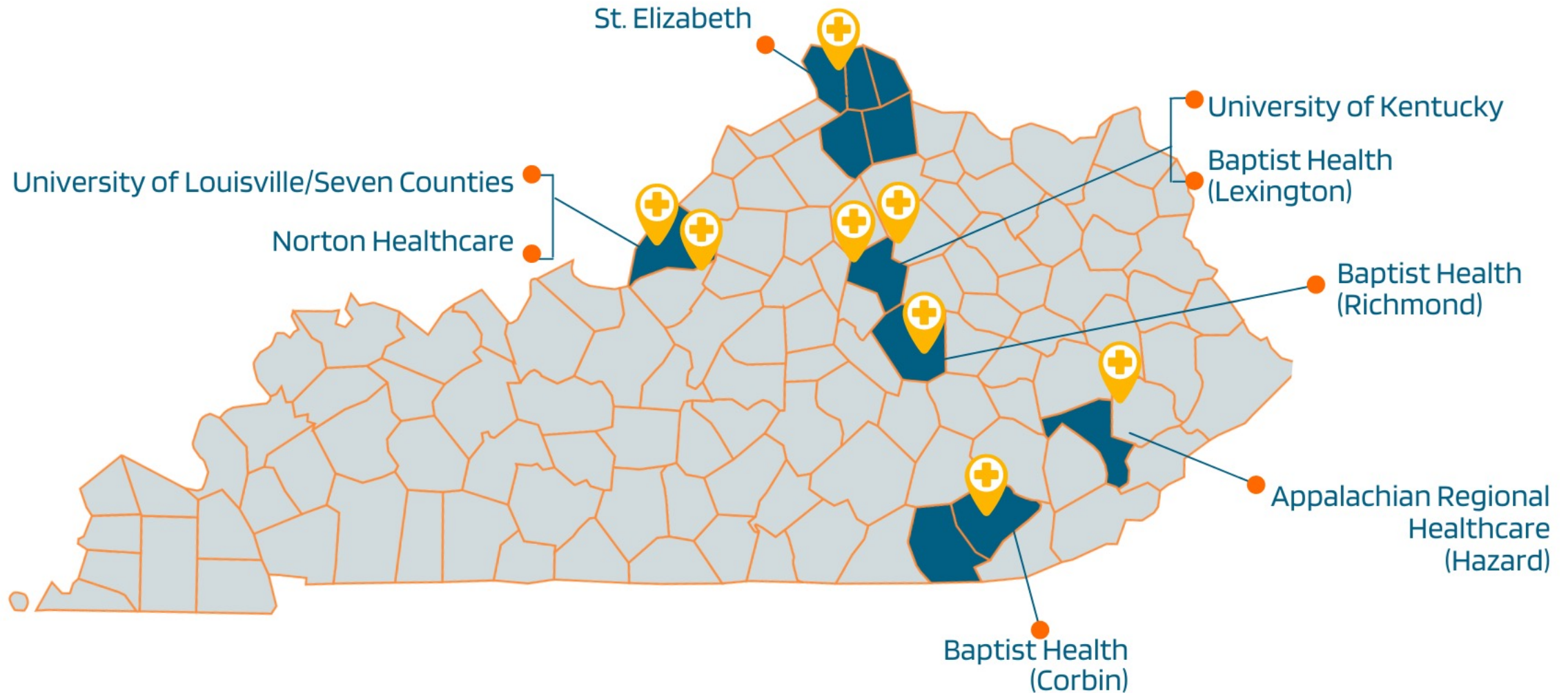
RESEARCH SUPPORTS

Medications for Opioid Use Disorder (MOUD)

- MOUD reduces
 - Opioid use, craving, and return to use
 - Risk of overdose and mortality
 - Recidivism
 - Infectious disease transmission
- MOUD improves
 - Treatment retention
 - Opportunity for choice and collaboration



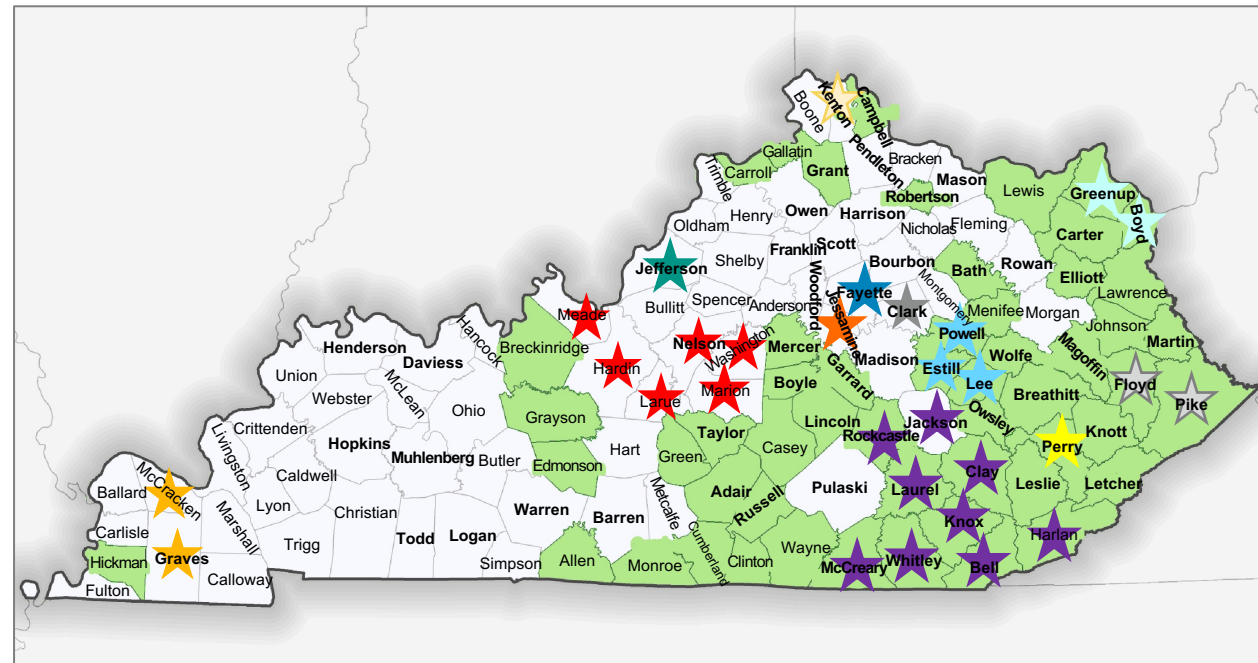
BRIDGE CLINIC SITES



QUICK RESPONSE TEAMS

assertive outreach to overdose survivors

- Home or on-site visits within 24-72 hours of overdose or opioid-related complication
- Treatment linkage and harm reduction services
- Follow-up phone calls
- Community engagement



■ 54 Vulnerable Counties

☆ 12 KORE-funded QRTs



OUD TREATMENT FOR CHILD WELFARE-INVOLVED FAMILIES

START

(Sobriety Treatment and Recovery Team)

TAP

(Targeted Assessment Program)

KSTEP

(Kentucky Strengthening Ties and Empowering Parents)



Recovery Capital



Recovery Residence Expansion

- Increase the number of Level 1 Oxford Houses
- Increase Level 2 & 3 recovery houses supporting MOUD
- Adopt National Alliance for Recovery Residences quality standards

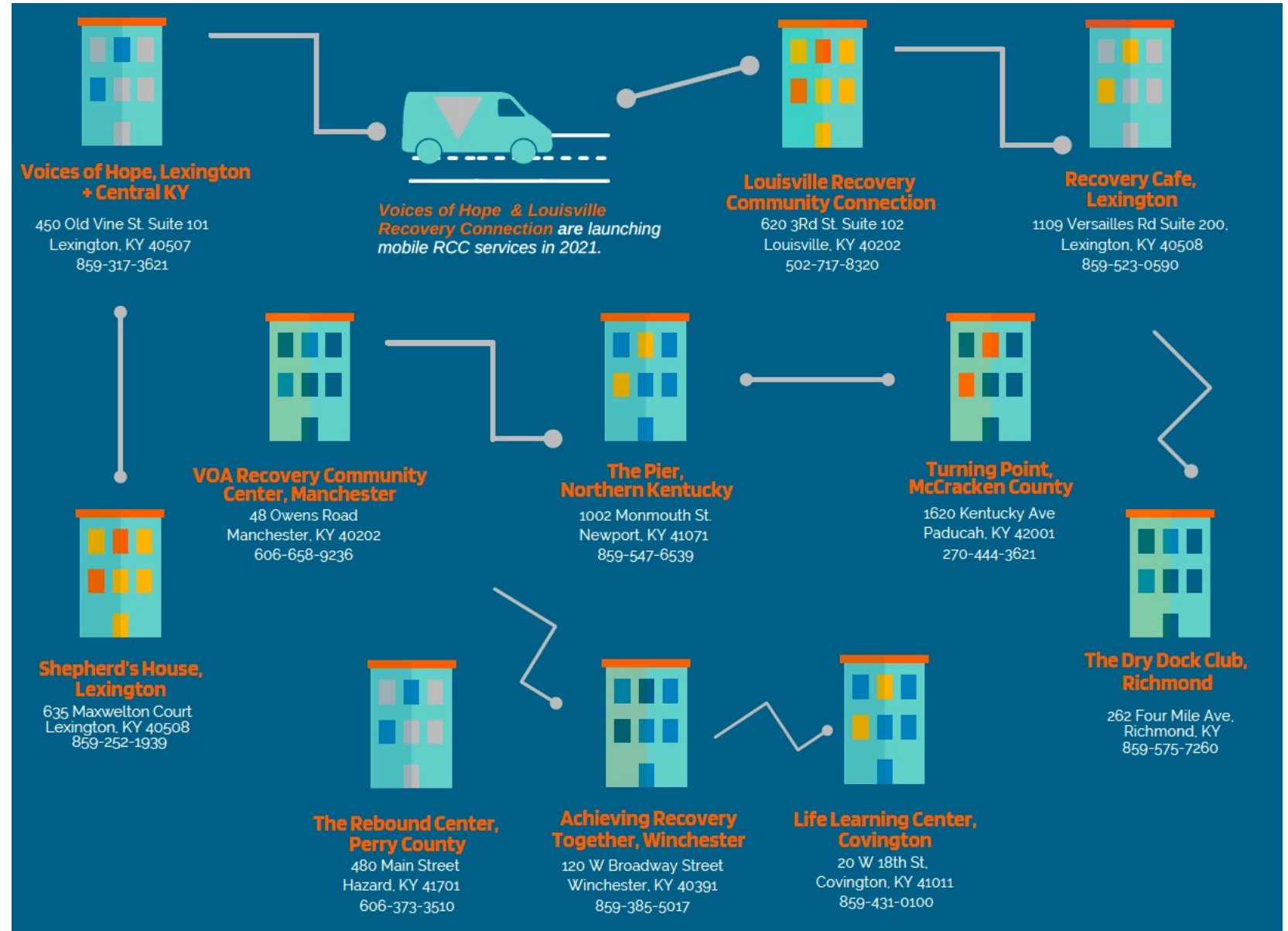
Level 1	Level 2	Level 3	Level 4
Peer-Run	Monitored	Supervised	AODE Residential
Alcohol & Illicit Drug Free			
Safe, Clean, & Dignified			
Peer Supportive Environment			
Accountability to Neighborhood, Ethics & National Standards			



Recovery Community Centers

Community-based, non-clinical setting that is safe, welcoming, peer-led, and supports all paths to recovery

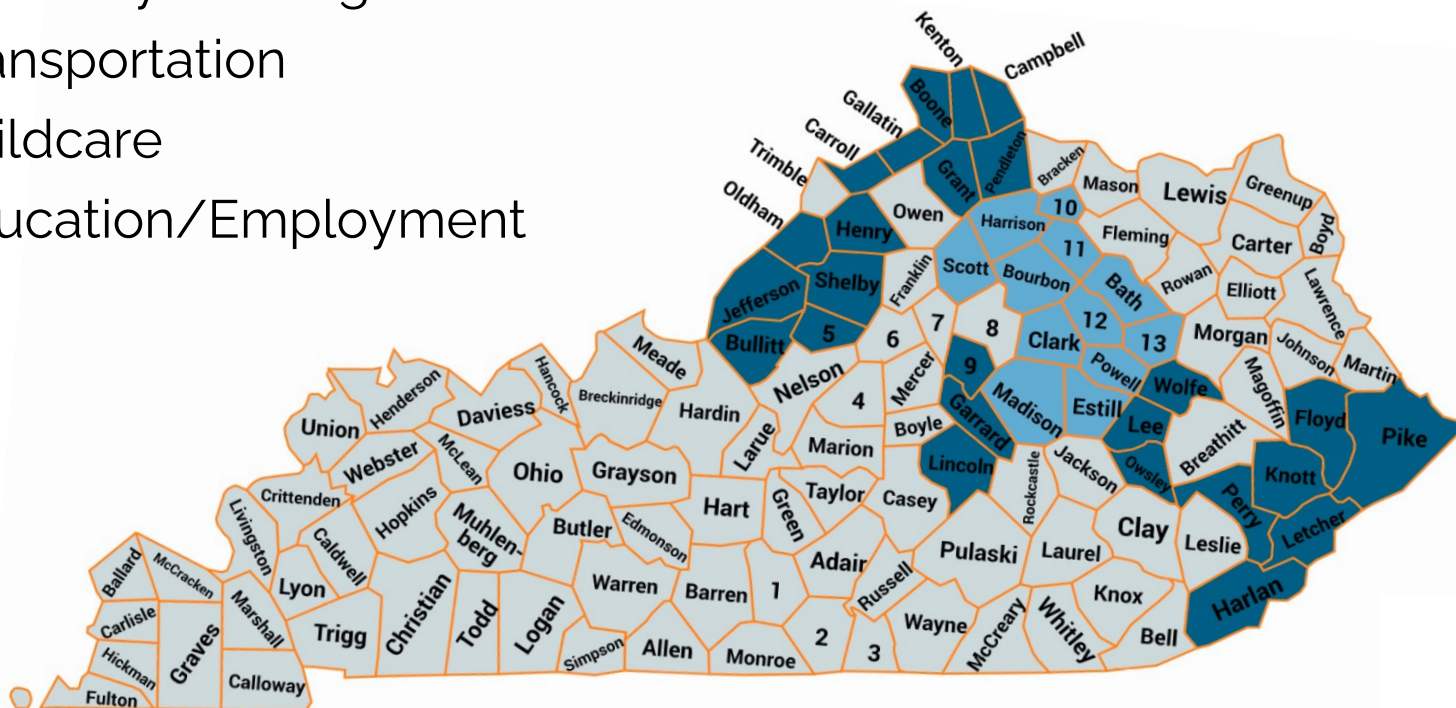
SOR FY 21 = 2,436 persons served



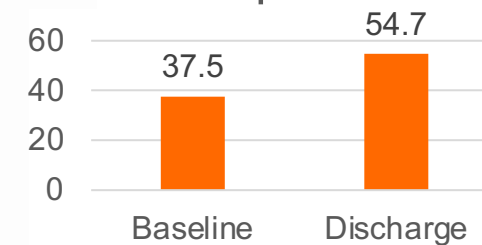
ACCESS TO RECOVERY

REDUCE BARRIERS TO ALTERNATIVE SENTENCING AND LONG-TERM RECOVERY BY BUILDING RECOVERY CAPITAL

- Basic needs
- Recovery housing
- Transportation
- Childcare
- Education/Employment



Brief Assessment of Recovery Capital



Kentucky ATR



Reentry Employment Program Administrators

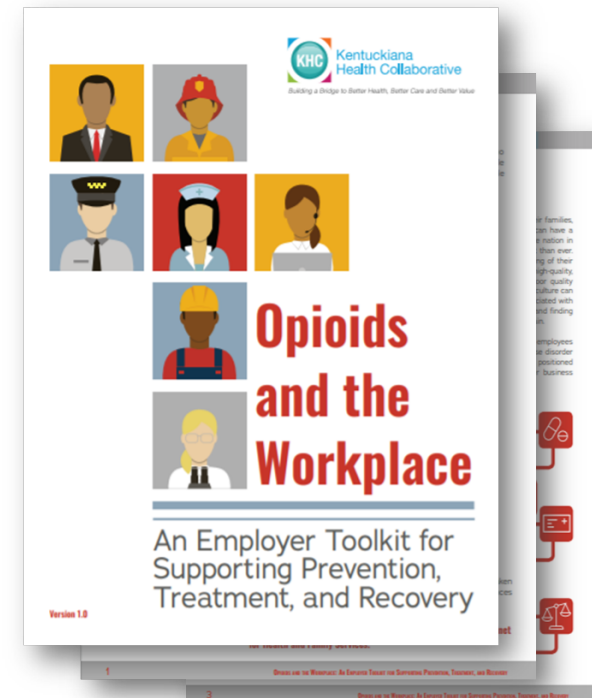
✓ Probation & Parole Officers → Employment Support Administrators

Strategic Initiative for Transformational Employment

- ✓ Job Entry & Retention Specialists
- ✓ Employer Resource Networks



199.0% increase in employment from intake (18.4%) to 6-month follow-up (55.1%)



TOGETHER
WE ARE STRONGER
THAN OPIOIDS.





THANK YOU!

275 E. Main St.
Frankfort, KY 40621

Katie.marks@ky.gov

kore@ky.gov

Kore.ky.gov